



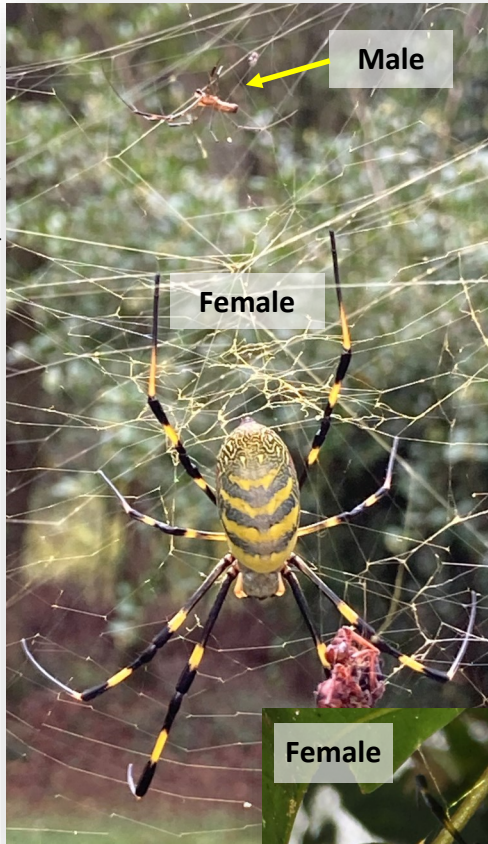
Jorō spider

Trichonephila clavata

Overview

Jorō spider is native to East Asia and was detected in Georgia in 2014. It is found in Georgia, North Carolina, South Carolina, and Tennessee and is spreading to adjacent regions. It has one generation per year in its native range.

Mary Nouri, Arnoldsville, GA

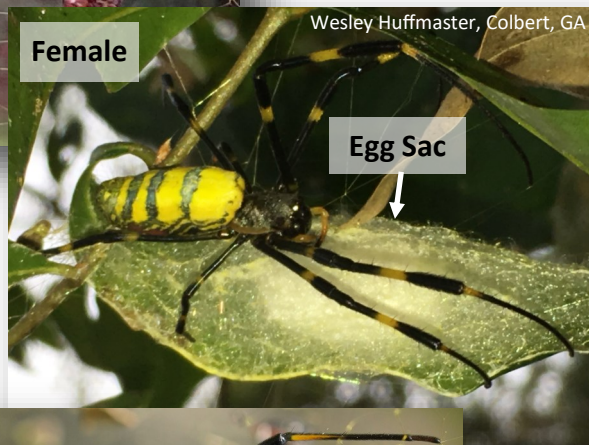


Life Cycle

Egg sacs laid mid-October to November and are dense, white silk sacs with 400-500 eggs. Sacs are attached to leaves, tree bark, and human-made structures.

Adult females become sexually mature in September and early October. Their body is 0.67-1.2 in (17-30 mm) long and is bright yellow, with broad, horizontal bluish-green bands on the top side of the abdomen, large red markings on the bottom side of the abdomen, and has long, black legs with yellow-orange bands or, rarely, all black legs.

Adult males mature by late August. Their body is 0.16-0.31 in (4-8 mm) long and their cephalothorax is light brown with two dark brown long stripes on both sides. The abdomen is elongate-oval with its topside a greenish-brown with two yellowish long stripes on both sides of the dark brown middle line.



Wesley Huffmaster, Colbert, GA

Sarah Morgan, Cumming, GA



More Info

The closest lookalike in the SE US is the golden silk orb-weaver (*Trichonephila clavipes*). The adult female golden silk orb-weaver has rows of silvery white spots on the abdomen instead of blue bands and the legs are yellow-orange with brown bands and three of four pairs have black tufts of hairs at the joints.